



Star Theatre compact

MODE D'EMPLOI

Pour apprécier pleinement ce produit, nous vous conseillons de lire attentivement ce manuel et de le conserver afin de vous y reporter lorsque vous en aurez besoin.

MANUALE DI ISTRUZIONI

Per apprezzare pienamente le potenzialità di questo prodotto, vi consigliamo di leggere attentamente il manuale di istruzioni e di conservarlo per utilizzi futuri.

MANUAL DE INSTRUCCIONES

Para apreciar plenamente la potencialidad de este producto, le aconsejamos que lea atentamente este manual y que lo conserve para futuras consultas.

INSTRUCTION MANUAL

To fully appreciate this product's potential, we advise you to read this manual carefully and keep it for future reference.

~Introduction~

This apparatus projects an image of the stars as they really are and gives you the pleasure of observing the night sky in your own home. It has been developed with the collaboration of Takayuki Ohira, who has created projectors for the world's most advanced planetariums, including Megastar II and Cosmos, which can project 5 million stars and which has earned it a place in the Guinness Book of Records.

Nowadays, the excessive use of neon lights and street lights in urban areas makes stars practically invisible. So-called "light pollution" makes it increasingly difficult to find places to observe the stars. STAR THEATRE-COMPACT was conceived to enable everyone to marvel at the great beauty of the night sky, in their own homes.

The heavenly bodies are not exactly the same ones you can see in a real planetarium, but we are sure that our projector will encourage you to visit other planetariums and find out more about the wonders of the sky.

Table of contents

★ Introduction.....	Page. 22
★ For your safety.....	Page. 23
★ Packing list.....	Page. 24
★ Names and functions of components.....	Page. 24
★ How to insert or change batteries.....	Page. 24
★ Basic operating procedure.....	Page. 25
★ How to adjust the focus.....	Page. 26
★ How to adjust the projection angle.....	Page. 26
★ How to change the disc.....	Page. 26
★ Troubleshooting (Q&A).....	Page. 27
★ Product specification.....	Page. 28

Important Indication on use and suggestion

To fully appreciate the projected images, make sure the room is completely dark. It may take a few minutes for your eyes to become used to the darkness. Look at the centre of the projected image and wait for your eyes to refocus: the first images projected may appear a little blurred, but as your eyes become accustomed to the darkness you will see the stars clearly.

The projected images can be seen most effectively on a white or light coloured ceiling. The ideal projection distance is between 2 and 2.30 metres. Images projected at much greater distances will be out of focus.

To protect eyes from the light, if the projector is turned on when there is no disc inserted it will turn itself off automatically. In this case, insert the disc and turn the projector on again. Depending on how the disc is inserted, the visible part of the Milky Way will vary.

To clean the projector or the disc, wipe gently with a soft cloth. Do not use solvents, petrol or any other chemical substances.

• For your safety

Read the instruction manual carefully before using: it contains important information and instructions which should be followed to ensure user safety and prevent damage to people and property. When you have finished reading it, we suggest you keep the manual for future reference.

STAR THEATRE-COMPACT is a safe product, however, as with any electrical equipment, if it is used inappropriately it can cause fires or electric shocks. You are advised to read these guidelines carefully for your own safety and that of others and in order to fully enjoy the functions of this product.

Follow these safety tips.

Read the instruction manual before using.

Do not use the product if it is damaged.

If the functions have been changed or the product has been damaged in any way, contact the point of sale where the product was purchased.

If smoke or strange noises issue from the product, or if it shows any other abnormal behaviour, do not try to repair it yourself.

Turn the product off and contact the point of sale where the product was purchased.

The instruction manual contains various symbols: we suggest you learn their meaning before reading the manual.

Serious Danger

Failure to heed this warning may result in a fatal electric shock or serious fire.

Danger

Failure to heed this warning may result in an electric shock or serious damage may be caused to people and property.

Meaning of the symbols:

Meaning of the symbols:

Forbidden



Dry hands only



Do not submerge in water



Do not dismantle



Do not touch



Warning



Warning

Warning Use only where small children cannot reach the main unit.

Warning The STAR THEATRE-COMPACT unit generates heat during use and may cause low temperature burns if you continue to maintain contact with these surfaces for a length of time. If the unit becomes abnormally hot during use, turn it off.

Do not dismantle Do not disassemble, repair or alter the unit, since this may cause electric shocks, fires or damage.

Forbidden Do not put metal objects or flammable objects inside the unit, since this may cause electric shocks or fires. Be extra careful if there is a small child in the family.

Forbidden Do not place the unit under direct sunlight, since the lens could generate heat that could cause a fire.

Forbidden Do not use or store the unit in the places described below, since this may cause damage, liquid leaks, or fires.

- Places where the temperature can get abnormally high such as inside a closed car or under direct sunlight.
- Cold places where the temperature drops to 10 degrees Centigrade or lower.
- Near oily smoke or steam such as generated by a kitchen stove and humidifier.
- In humid or dusty locations.
- On unstable surfaces susceptible to impact or vibration.

Forbidden Turn off the power and stop using the unit immediately when it acts abnormally, such as producing smoke or strange smells or noises, since this could cause electric shocks or fires.

Forbidden Turn off the power and stop using the unit immediately when water or other foreign material gets inside the unit since this could cause electric shocks or fires.

Forbidden Turn off the power and stop using the unit when you drop or break it since this could cause electric shocks or fires.

Forbidden Remove the batteries from the battery compartment when you are not going to use the unit for a while since this may cause fires.

Do not touch Do not touch the unit with wet hands since this could cause electric shocks or fires.

Do not use in bathroom Do not use the unit in the bathroom, since this could cause electric shocks or fires.

Do not use in water Do not put the unit under water or wet it since this could cause electric shocks or fires.

Do not touch Do not touch the unit during a thunderstorm since this could cause electric shocks.

Caution during usage

- ★ Be sure to set the main unit in a stable, secure location. If it is not located on a stable surface, this may lead to damage from dropping or tipping over.
- ★ Never look directly into the lens or point the lens at a person's face while the main unit is turned ON. This could lead to serious eye damage.
- ★ Be sure that there are no vases or flowerpots, no cups containing liquids, no containers containing any cosmetics or pharmaceutical products near the main unit. If any of these items might fall or tip over, liquids coming into contact with the main unit could cause damage.
- ★ Be sure never to drop, strike, apply any excessive force, or treat the main unit roughly in any manner. This could cause damage.
- ★ If you move the main unit of your STAR THEATRE-COMPACT or attempt to change the disc when the room is dark, this could lead to damage. Always turn on a light in the room when you carry out any of these operations.
- ★ If you move this product from an extremely cold environment into a warm room, the sudden change in temperature may cause condensation to form on the lens and prevent the product from functioning properly. Give the product approximately one hour to allow it to adjust gradually to the warmer room temperature in order for it to function properly.
- ★ In the event that you do not use this product for a long period, be sure to remove the fixed star disc prior to storage. Leaving this disc inside the main unit could lead to damage.
- ★ Never use combinations of old and new batteries, or different brands of batteries. Be sure to correctly install the batteries with regard to the + and - terminals as directed.
- ★ Be sure to turn the switch OFF after using your STAR THEATRE-COMPACT. Remove the batteries if you plan to store this product for a long period of time. Do not allow the batteries to short-circuit. In the event that liquid leaking from batteries gets in the eyes, rinse the eyes with large amounts of water and contact a physician immediately. If the liquid leaks onto the skin or clothes, rinse it off with water.

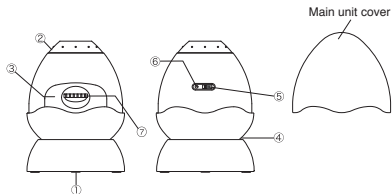
• Packing list

If you find any damaged parts when you open the package for the first time, or if any of the parts are missing, please contact the point of sale where the product was purchased. If you detect anything out of the ordinary when you open the package, do not attempt to use this product. Please note that some of the parts within may vary slightly from the illustrations on the package.

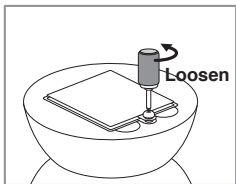
- ① Main unit..... 1
- ② Interchangeable discs..... 2
- ③ Main unit cover..... 1
- ④ User's instruction manual..... 1

• Names and functions of components

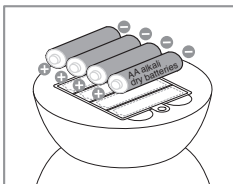
- ① Battery cover. Used when inserting or removing batteries.
 - ② Focus dial. Used to adjust the focus.
 - ③ Disc tray. Used when inserting or removing the disc to be projected.
 - ④ Projection angle control. Can be tilted up to 25°, either forward or backward.
 - ⑤ Power source ON/OFF switch. Used for turning the main unit ON and OFF.
 - ⑥ Power source ON/OFF indicator lamp. Used for indicating whether the main unit is ON or OFF. The green lamp indicates that the unit is ON when lit.
 - ⑦ Diurnal rotation dial. By twisting the dial manually, diurnal rotation can be achieved.
- * AUTO-OFF function 30 minutes after turning the unit ON, the power source will shut OFF automatically.



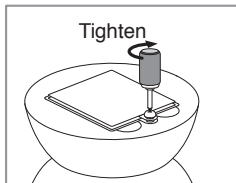
• How to insert or change batteries



1. Loosen the battery box cover on the back of the main unit and open the lid.

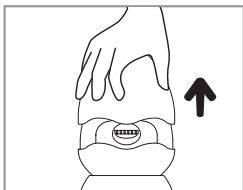


2. Insert 4 single AA type alkaline dry batteries into the box as shown.

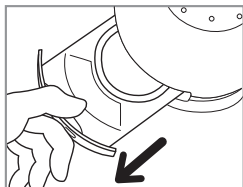


3. Close the lid and tighten the screw.

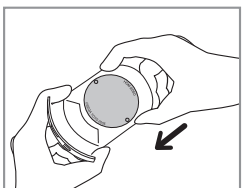
• Basic operating procedure



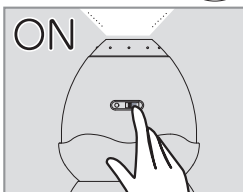
1. Insert the batteries (sold separately), remove the main unit cover.



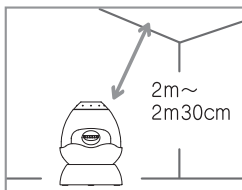
3. Pull open the disc tray and remove it from the unit.



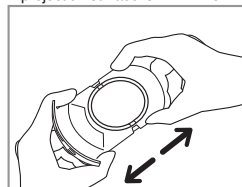
5. Ensure that the top and bottom sides of the disc and set it on the tray appropriately and return the two parts of the tray to their master position.



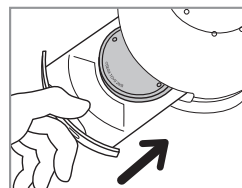
7. When you turn ON the power source, the power source indicator lamp lights up, and when you turn out the lights in the room, the starlit sky is projected.



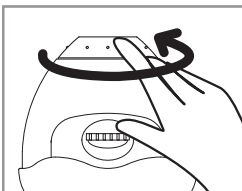
2. Place the main unit on a flat surface, such as a table, that is parallel with the floor in as table location. (The most appropriate distance for the projector from the projection surface is 2 m ~ 2.3 m.)



4. Extend the two parts of the disc tray.



6. Put the tray back into the main unit, and close it.



8. With the focus dial on the top of the main unit facing you, twist the dial counter clockwise to make minor focal adjustments. When the unit is put into the package for shipping, the focus dial is tightly twisted to one side which may make it difficult to twist at first. Make anywhere from 5 to 10 revolutions of the dial in order to find the most appropriate dial setting.

• How to adjust the focus

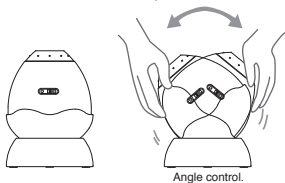
If the centre of the projected image is out of focus, turn the focus adjustment dial. The stars on the edge may appear to be more out of focus than those at the centre. This difference is due to the lens structure and does not indicate that the projector is faulty.



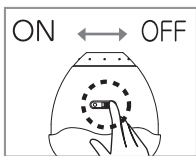
• How to adjust the angle of projection

Hold the main unit as you adjust the angle of projection.

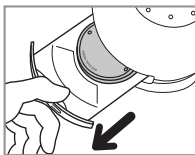
25°, forward or backward.



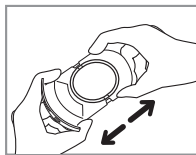
• How to change the disc



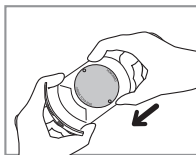
1. Use the ON/OFF switch to turn the power source of the main unit OFF.



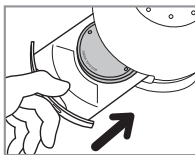
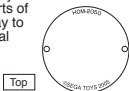
2. Pull open the disc tray and remove it from the unit.



3. Extend the two parts of the disc tray.



4. Ensure that the top and bottom sides of the disc and set it on the tray appropriately and return the two parts of the disc tray to their original position.



5. Put the tray back into the main unit, and close it.



6. When you turn ON the power source, the power source indicator lamp lights up, and when you turn out the lights in the room, the starlit sky is projected.

With the power source of the main unit in the ON setting, in order to replace the disc, when you pull out the disc tray the power source turns OFF automatically to avoid damage to the user's eyes. Please be careful when replacing the disc. With the lights turned off in the room, and with the power source of the master unit turned OFF, the absence of any light can lead to accidents. In order to prevent accidents, be sure to turn on a room light when replacing the disc prior to operating your STAR THEATRE-COMPACT.

Q The stars are not clearly visible.

- A**
- * Ensure the centre of the projection image is in focus.
 - * Wait a while for your eyes to become used to the dark.
 - * Make sure there is no light in the room, or on the ceiling or the place where the images are projected.
 - * Ensure there are no objects blocking the projection.
 - * Make sure the projection distance is not too great.

Q The Milky Way is not projected completely and is out of focus.

- A**
- * The visible sections of the Milky Way vary according to how the disc is inserted.

Q The projector turns itself off unexpectedly.

- A**
- * If the main switch is ON and there is no disc in the box, the projector will turn itself off automatically to prevent eye injuries. Insert the disc and restart the projector.

Q The projector is not working.

- A**
- * Ensure the disc is inserted.